

Dutch Creek Regional Trail

FOOTHILLS PARK & RECREATION DISTRICT

COMMUNITY MEETING

March 30, 2022



Meeting Agenda

Project information and goals

Previous planning studies

Land ownership

Public input summary

Conceptual trail alignment plan, cross sections

Review next steps

Dutch Creek Regional Trail



ARCHITERRA GROUP



Foothills
Park & Recreation District

Project Information & Goals

Location: Kipling to C-470

Length: Approximately 2 miles

Benefits: Increases connectivity, accessibility, & safety within community

Guidelines: Compliance with trail design guidelines

Project Goals



Direct connections to other regional trails



Connect open gaps in trail alignment

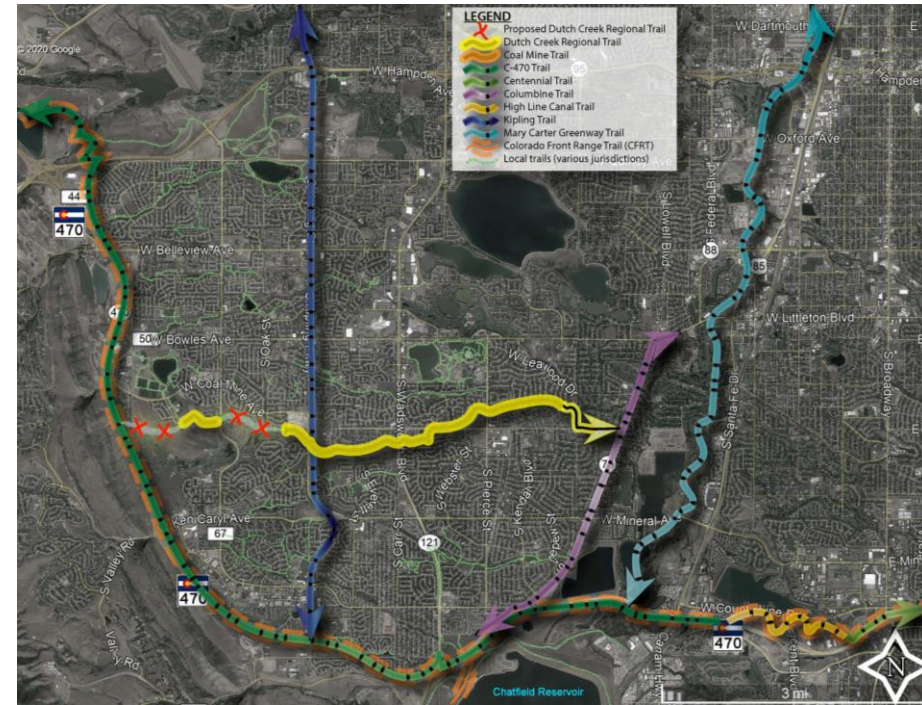
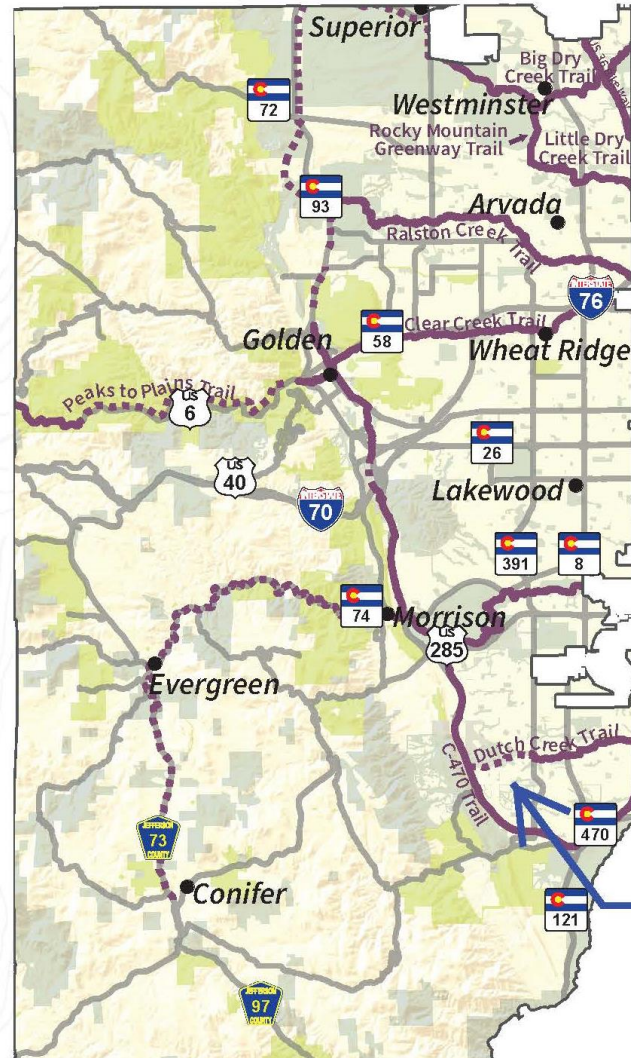
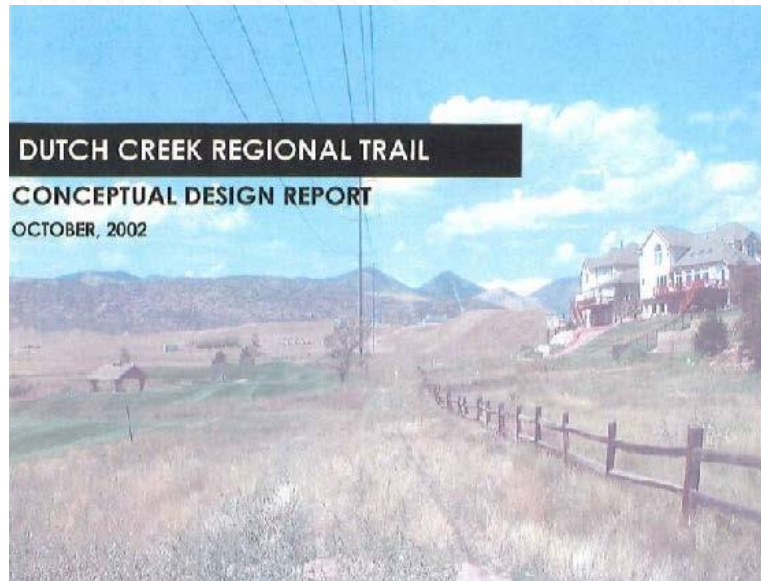


Increase connections to many recreational amenities

Jeffco Trails Plan

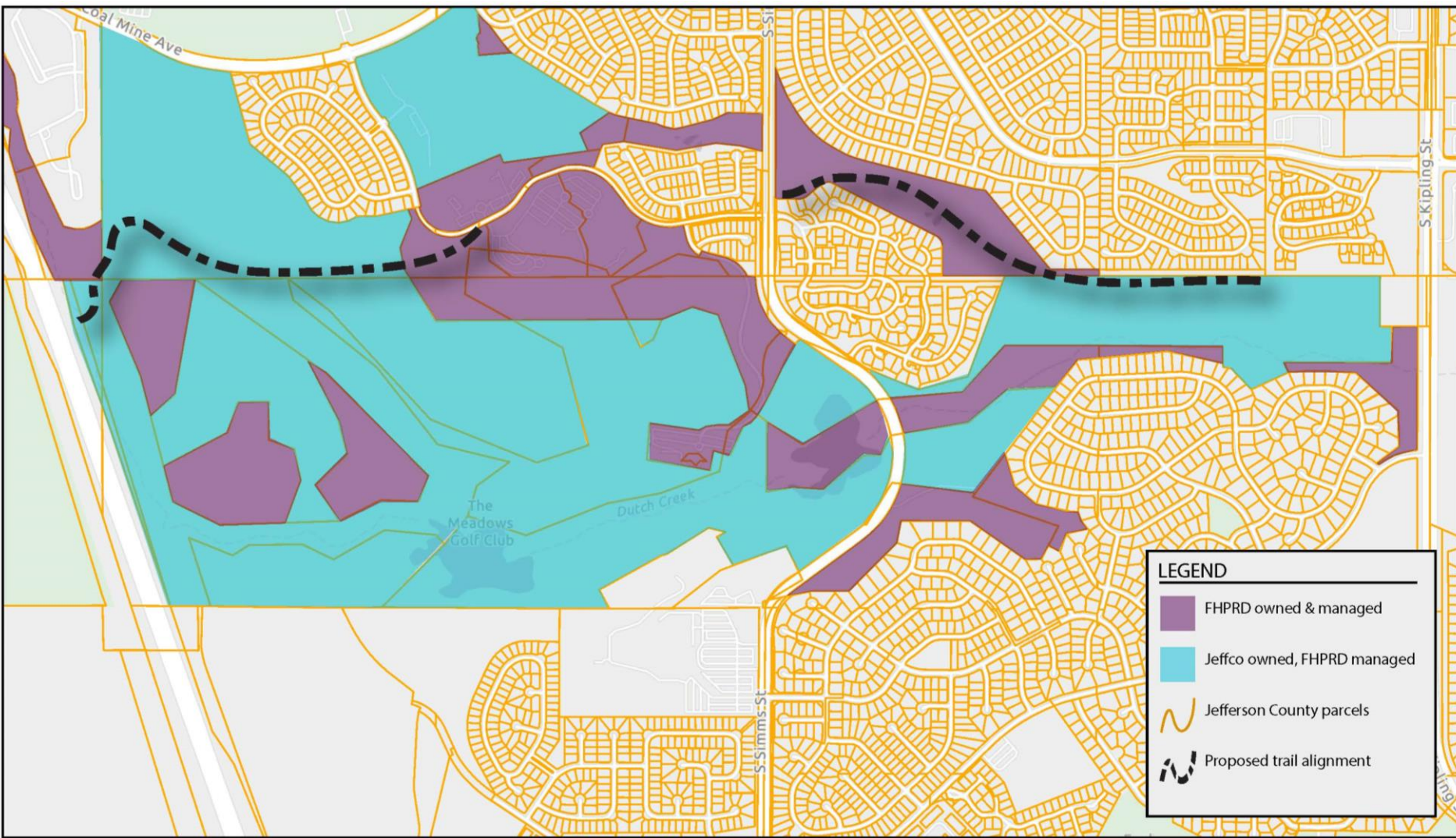
Improve connections across the entire region

A multimodal trail network will connect communities to each other, to nearby parks, trails, open space, to more local businesses, and to neighboring trail systems outside the county.



Project Location

Dutch Creek Regional Trail – Previous Planning Studies



Dutch Creek Regional Trail – Land Ownership



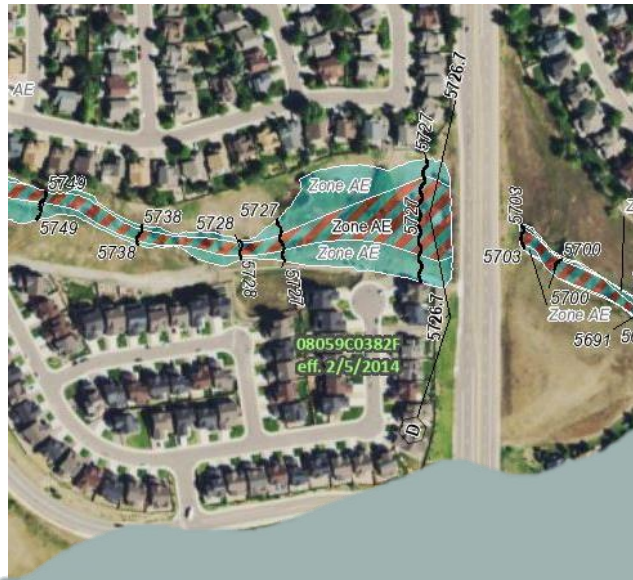
SIMMS CROSSING OPTIONS

Overpass (bridge):

- Not feasible due to high cost, not enough right of way (would require approx. 270' on each for accessible ramps)

Underpass

- Would be ideal for a safe crossing
 - Unfeasible at existing golf crossing (not wide enough, would require a new underpass, no room for the trail approaches on east or west side without significant impacts to golf course)
 - Unfeasible north of Ward St. (exist. detention basin on west side of Simms, underpass would negatively impact flood storage)



Recommendation: work with Jeffco to make an at grade crossing as safe as possible (signal, flashing lights, median refuge zone, etc.)

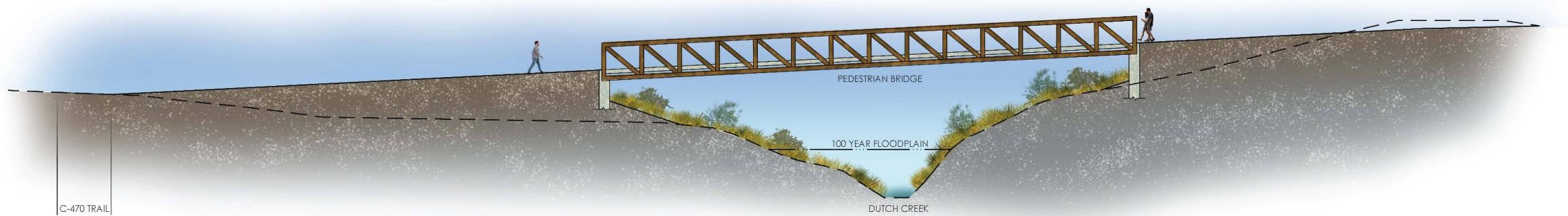


Wayfinding:

- Foothills is planning on doing wayfinding signage as part of final design

Cross Sections:

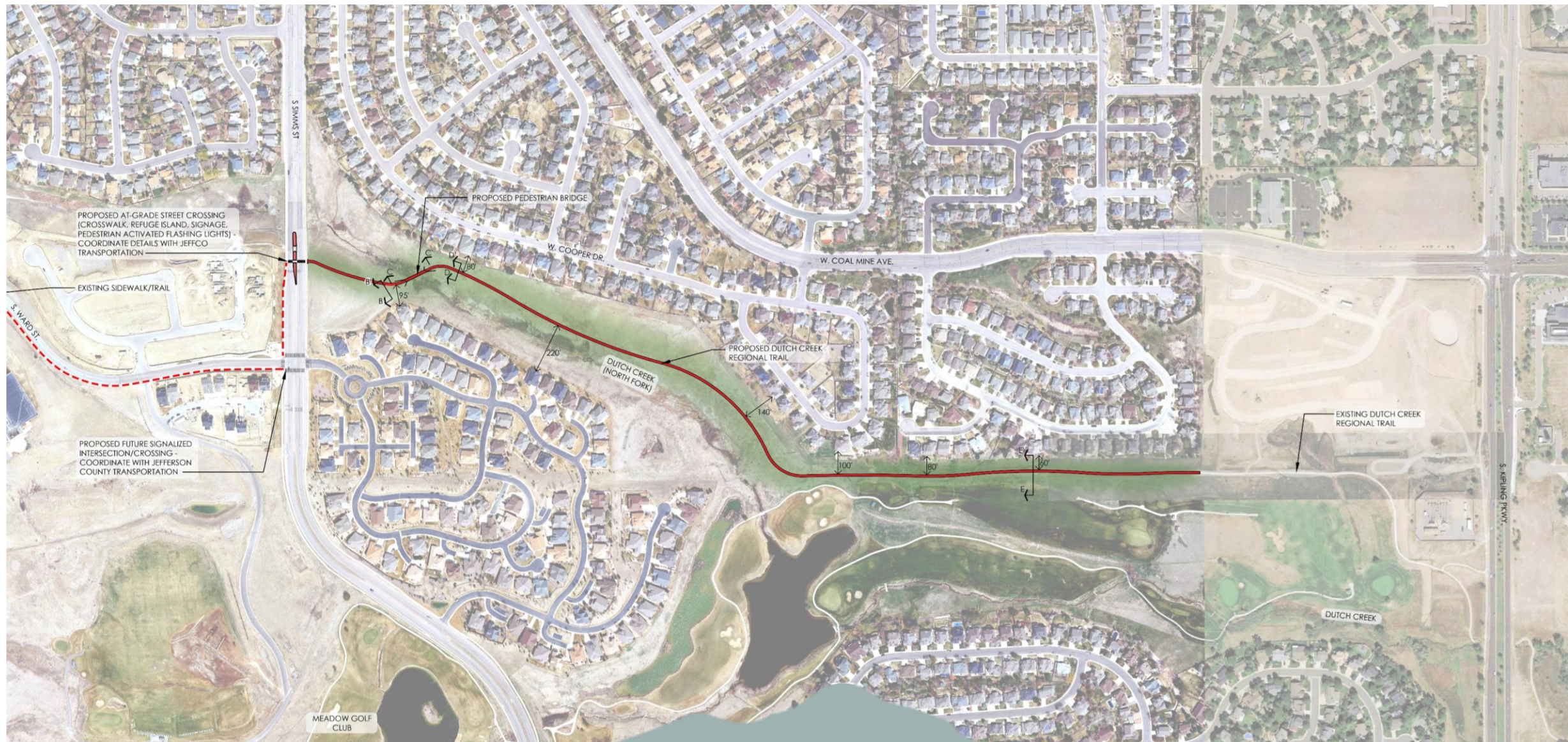
- Would like to see some cross sections at pedestrian bridges, golf course
 - Cross sections are shown on the boards (example below)





Dutch Creek Regional Trail – Conceptual Trail Alignment Plan





Dutch Creek Regional Trail – Conceptual Trail Alignment Plan



Dutch Creek Regional Trail – Conceptual Trail Alignment Plan



Tonight:

Stop by one of the two stations

Review plans/sections in more details

Ask questions, give comments
(comment cards are also available to leave at
the front table)

Next Steps:

Summarize public comments

Refine trail alignment plan/sections

Prepare detailed cost estimate

Dutch Creek Regional Trail



Dutch Creek Regional Trail

FOOTHILLS PARK & RECREATION DISTRICT

COMMUNITY MEETING

March 30, 2022

